



ENGINEERED SOLUTIONS

LoadMate *Plus*™

LoadMate Plus

Quick setup machine tending

LoadMate Plus is Mitsubishi Electric Automation's engineered solution offering for machine tending, specifically created to be easy to set up and use. Our team has done the engineering necessary so you can start running and making parts quickly after delivery. Share your application and our experts will help you choose the best configuration. Since we are the Original Equipment Manufacturer (OEM), you can trust you will have the best support for your robot and CNC.

Flexible

Multiple arrangements and compatibility with a variety of robots

Configurable

Options for cabinet sizes, enclosures, extensions, and more to match your shop needs

Customizable

Robot working area available for various part types or applications

Mobility

Easily move around as jobs require with lockable wheels for stability in operation

Safety

Variety of safety solution options available*

Quick Connection

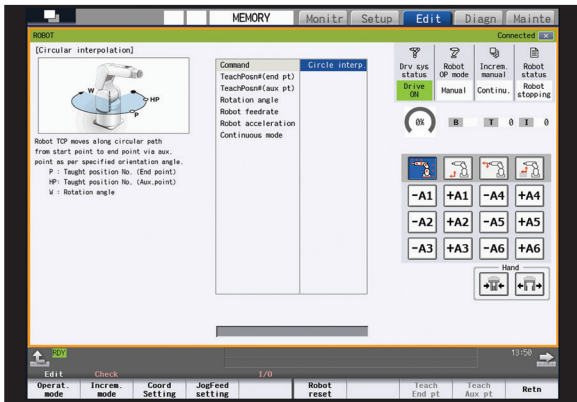
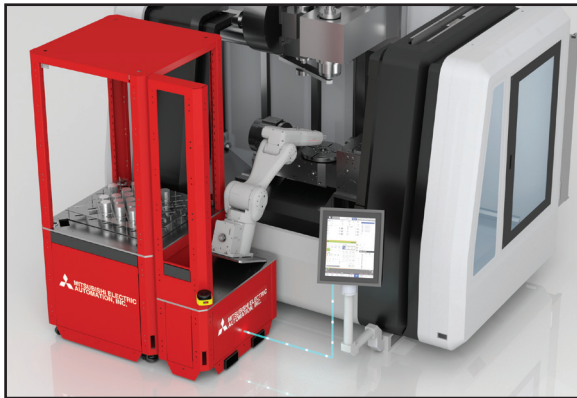
Easily interface via Ethernet

Direct Robot Control

Enables easy control of MELFA robots with our M8 series CNC controls

**Caution: Specific applications of the LoadMate Plus must be reviewed for safety at the time of design by the engineer, system integrator or dealer (the "Designer") who designs or installs the system. The Designer is responsible for the safety of the final solution and ensuring that it meets all local and industry safety regulations.*

LoadMate Plus Product Overview



KEY BENEFITS:

FLEXIBLE CONNECTIVITY



Plug and play machine tending

- **Simple connection via Ethernet** – Integrating the LoadMate Plus machine tending robot with Mitsubishi Electric's M8 Series CNC is as simple as plugging in an Ethernet cable. Manufacturers are able to get their investment up and running quickly. Discrete I/O is also available for integrating with other controls, making it easy to connect to any machine in the shop.

EASY PROGRAMMING



Program and adjust on the fly with no need for robot expertise

- **Direct Robot Control CNC software** – Through the Direct Robot Control (DRC) feature of our M8 Series CNC, operators can control and program the robot with menus and G-code from the same screen used for the machine tool. No robot programming experience or teach pendant is required, allowing manufacturers to use existing staff to automate and make adjustments on the fly.

TOTAL SUPPORT



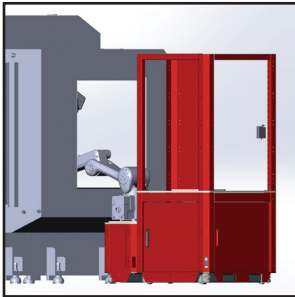
Automation experience from Mitsubishi Electric helps keep you running and growing

- **Mitsubishi Electric stands ready to support and assist** – With decades of experience in automation, Mitsubishi Electric Automation has the know-how to help optimize your production and assist in automating your manufacturing. Plus, with an available 3-year robot warranty, and technicians who can service both robot and CNC, you can be sure your production will continue uninterrupted.

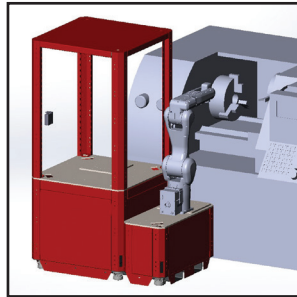
LoadMate Plus Product Overview

WORKS WITH A VARIETY OF MACHINE TOOLS

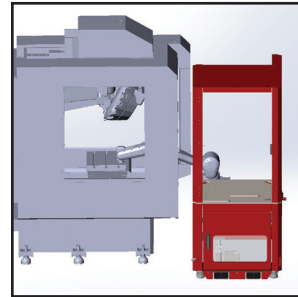
Consult with Mitsubishi Electric for the right configuration for your machine tool or application.



MILL



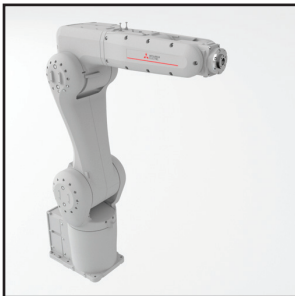
LATHE



DRILLING/TAPPING

KEY ROBOT OPTIONS

All robot options can be found in our technical specification guide.



RV-CR SERIES

Slim and compact robot offering a high level of utility and design in a cost-effective package. Perfect all around, versatile robot.



RV-FR SERIES

Available in a variety of reaches, payloads, and protection ratings (including Food Grade/Chemical Resistant) for jobs that require it.



ASSISTA COBOT

Our industrial Cobot combines the safety and ease-of-programming of a collaborative robot with the durability and higher cycle speeds of industrial robots.

MITSUBISHI ELECTRIC AUTOMATION, INC.

500 Corporate Woods Parkway, Vernon Hills, IL 60061
Ph 847.478.2100 • Fx 847.478.2253

[us.MitsubishiElectric.com/fa/en](https://us.mitsubishielectric.com/fa/en)

August, 2021 • ©2021, Mitsubishi Electric Automation, Inc. • Specifications subject to change without notice. • All rights reserved

NEXT STEPS

For optimal setup for your production needs, speak with an automation engineer

[> Connect with Us](#)