



for a greener tomorrow

PRODUCT RETURN FOR CREDIT

HOW TO PACKAGE YOUR RETURN

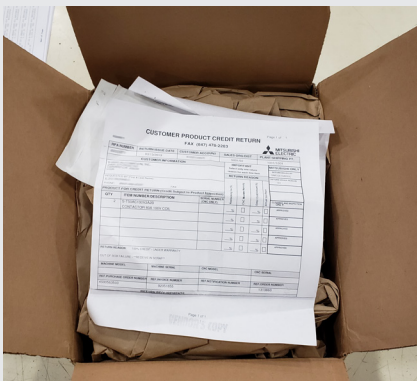
For credit, material must be new, unopened and in sealed original factory packing with no markings or stickers.



When returning materials for credit please be sure that there are **NO markings, stickers, or shipping labels** on the original Mitsubishi product box.



Place the original product box into an outer carton with adequate protective packing to avoid shipping damage.



Enclose a copy of the RPA form inside the shipping box.



Include **IA RPA Number** on shipping label to ensure timely processing. (ex. IA RPA# 6XXXXXXX)

RETURN ADDRESS:

MITSUBISHI ELECTRIC AUTOMATION, INC.
IA RPA Number
500 Corporate Woods Parkway
Vernon Hills, IL 60061 USA

**It is important to follow instructions to avoid credit denial.
Materials that do not pass inspection will be returned at customer's expense.**